



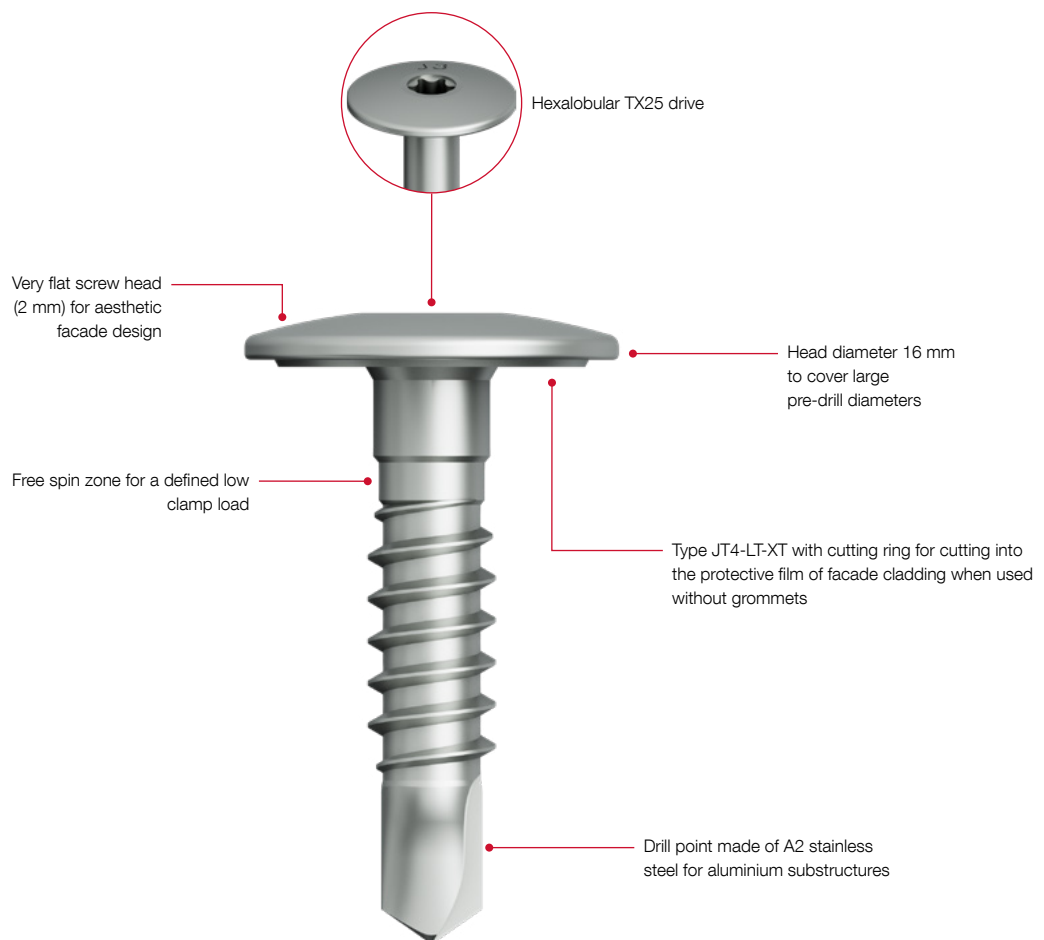
## LT-XT system

The specialist for the visible fastening of rainscreen facade claddings

## LT-XT system

Facade claddings with delicate surfaces, such as aluminium composite panels, are usually covered with special protective films to protect the surfaces from dirt and scratches during transport and installation.

For this type of facade cladding, EJOT has developed the LT-XT system, with which the protective films can be cut in a circle along the screws using a cutting ring and then removed from the panel surface without leaving any residue.

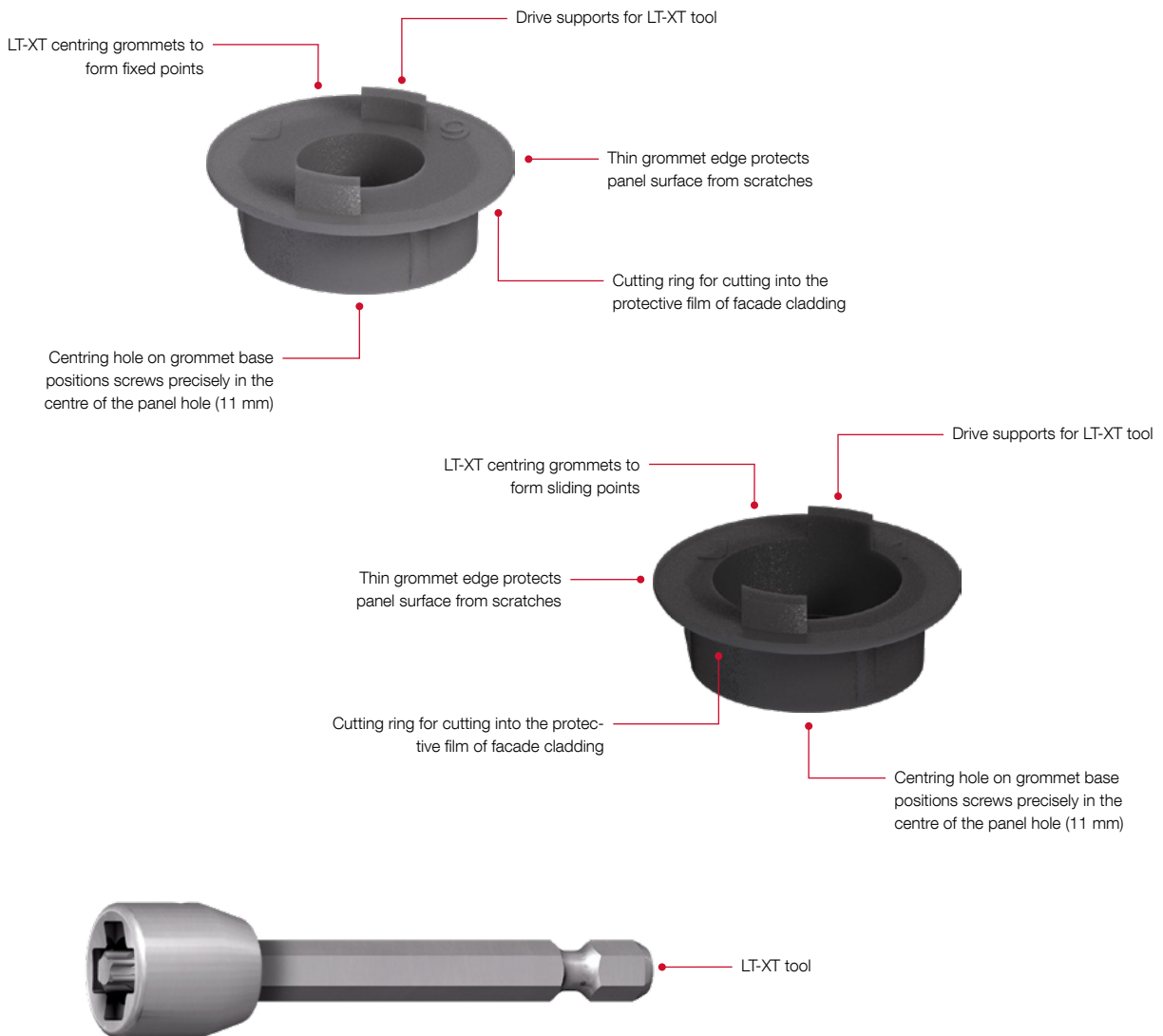




Detail view of fixed point for LT-XT system



Detail view of sliding point for LT-XT system



LT-XT system selection aid



<b>Screw type</b>	<b>JT4- LT-XT-3H/6-5.5x25 KD16</b>	<b>JT4- LT-2/6-6x50 KD16</b>
<b>Material</b>	A2 stainless steel with hardened Steel drill point	A2 stainless steel
<b>Application</b>	All common facade claddings	All common facade claddings
<b>Approval by cladding manufacturer</b>	Z-10.3-701 Mitsubishi  Z-10.3-774 3A composites	Z-14.4-851 PURICELLI
<b>Strip-proof</b>	yes	yes
<b>Substructure</b>	Aluminium	Timber / Aluminium
<b>Drilling capacity (t<sub>p</sub> pre-drilled) [mm]</b>	3.0	1.5–2.0
<b>Clamping thickness t<sub>fix</sub> [mm]</b>	6.0	8.0
<b>EJOT proof of usability</b>	P-S 18 0447	ETA-10/0200



LT-XT grommet for  
fixed points (F)

Centring grommet  
XT Ø11/4 F

Centring grommet  
XT Ø11/4 F



LT-XT grommet for  
sliding points (S)

Centring grommet  
XT Ø11/4 S

Centring grommet  
XT Ø11/4 S

Installation process LT-XT system





**EJOT SE & Co. KG**

**Market Unit Construction**

In der Stockwiese 35

57334 Bad Laasphe · Germany

T +49 2752 908-0

F +49 2752 908-731

[construction@ejot.com](mailto:construction@ejot.com)

[www.ejot.com/construction](http://www.ejot.com/construction)